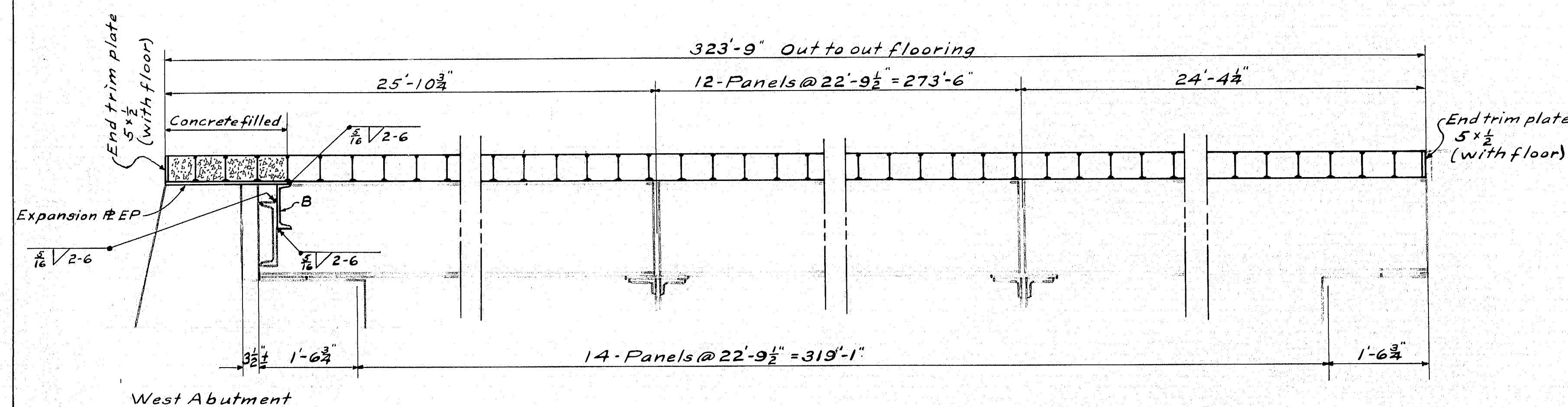
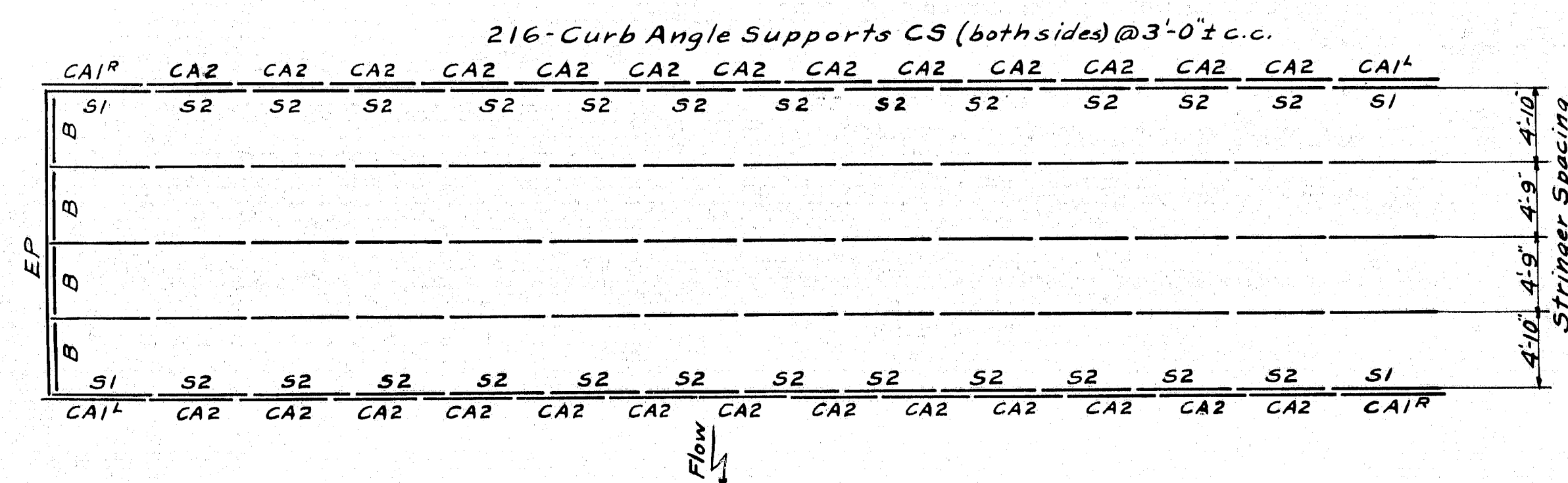


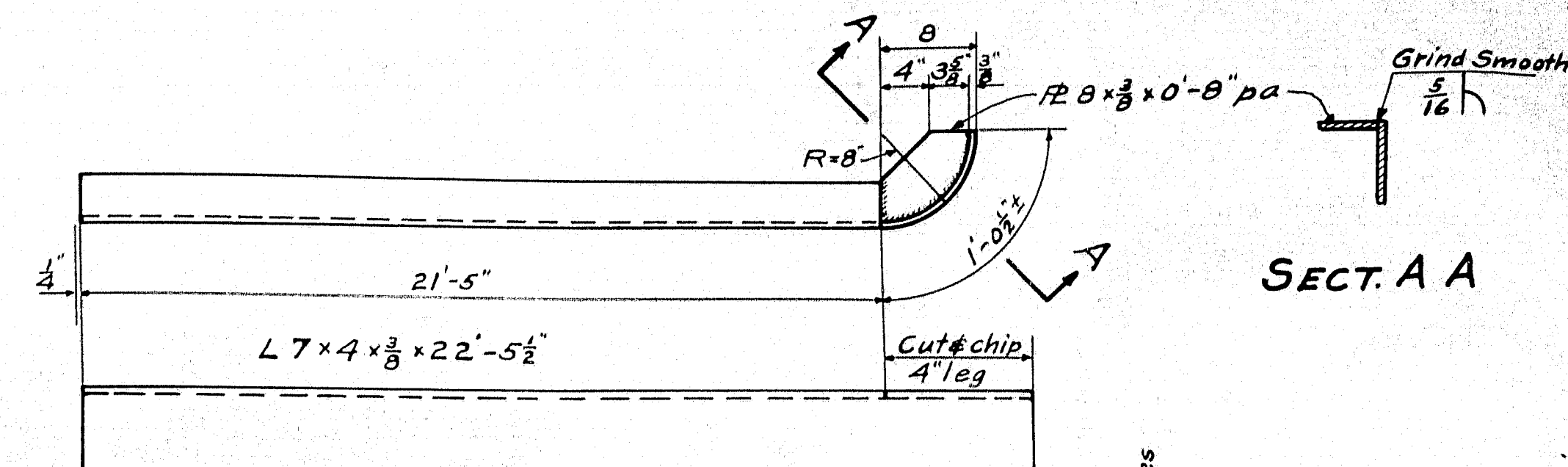
TRANSVERSE SECTION



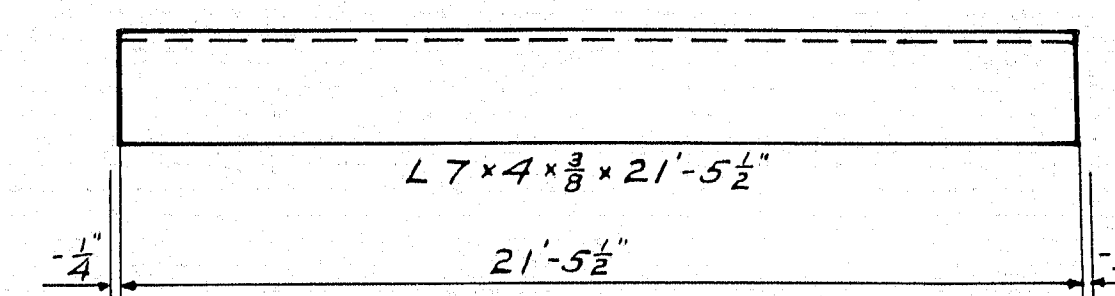
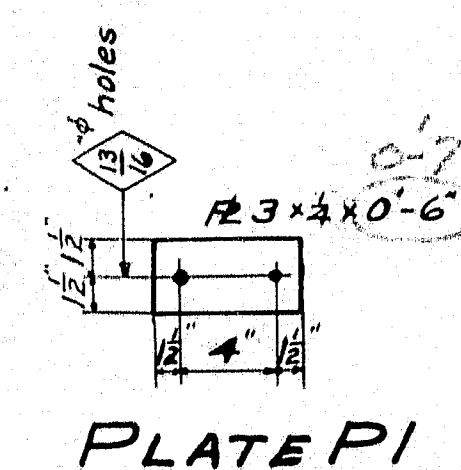
LONGITUDINAL SECTION



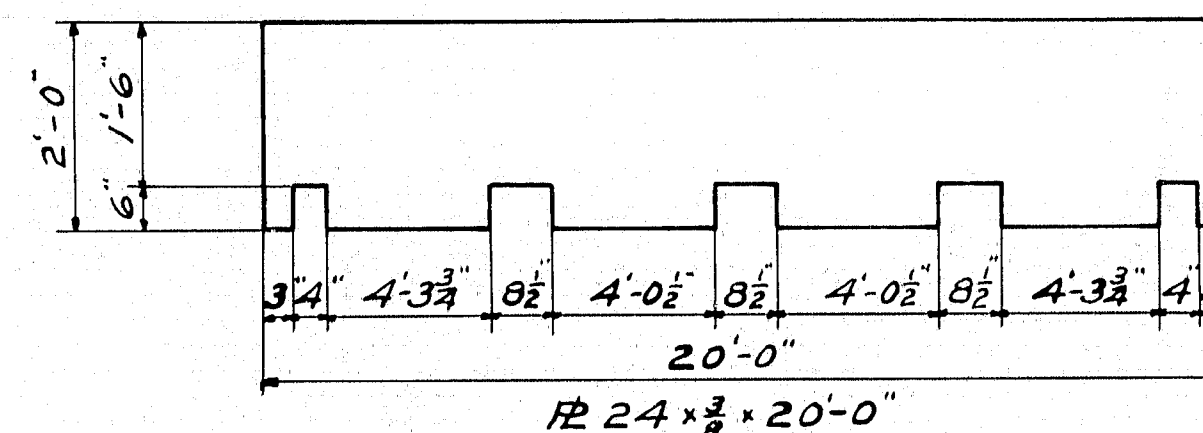
STEEL ERECTION DIAGRAM



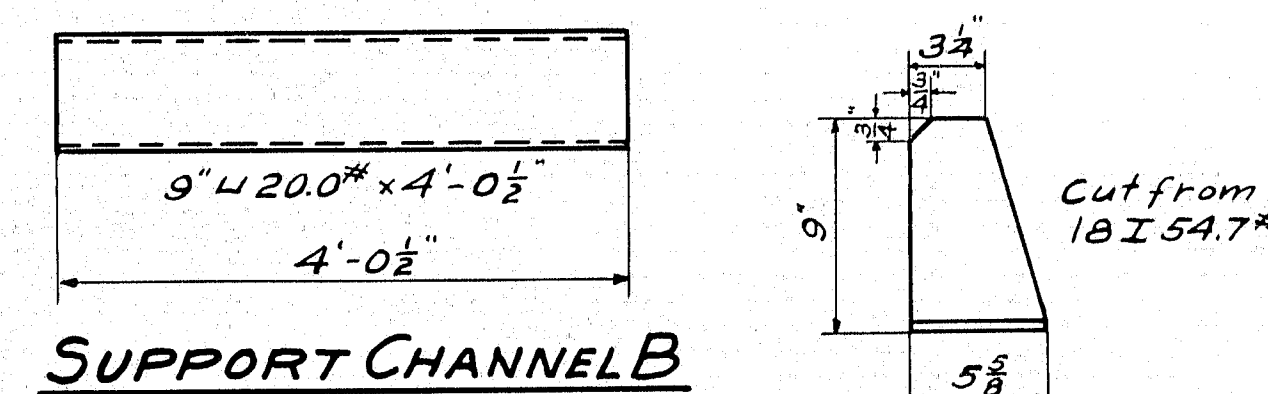
CURB ANGLE CA1^R (As Shown)
CURB ANGLE CA1^L (Opp. Hand)



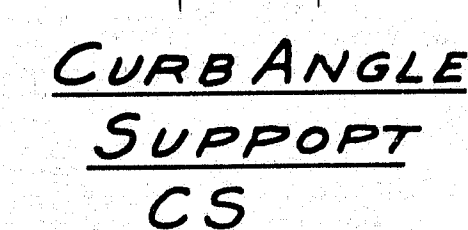
CURB ANGLE CA2



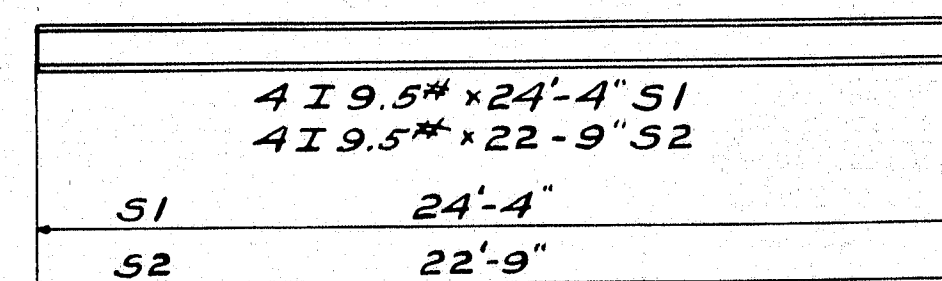
EXPANSION PLATE EP



SUPPORT CHANNEL B



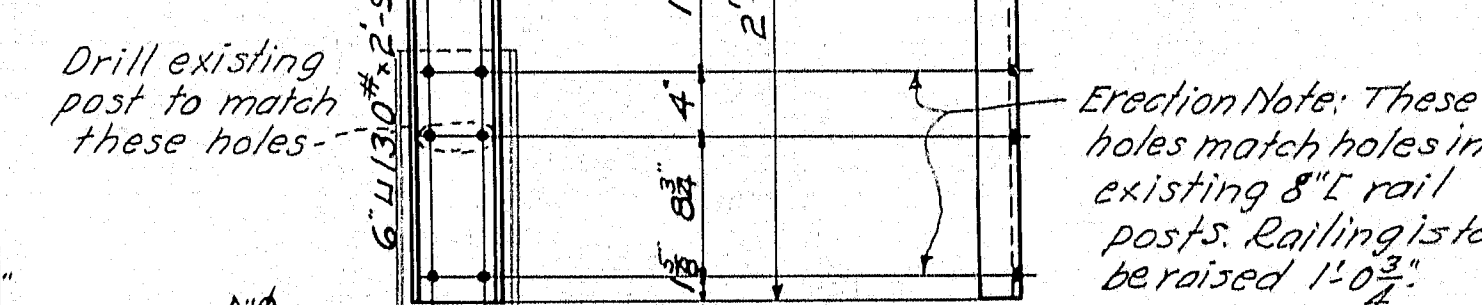
CURB ANGLE
SUPPORT
CS



FLOOR SUPPORT S1
FLOOR SUPPORT S2

BOLT SCHEDULE
To be furnished with
Structural Steel
75-Machine Bolts 3/4" x 13"
35- do do 3/4" x 12"
20 do do 3/4" x 12"
Hex. head & hex. nut.

FLOORING
5" Open Steel Grid Flooring (6,475 sq. ft. required) shall conform to the Standard Specifications for Highway Bridges (1944) adopted by the American Association of Highway Officials.
Flooring shall be painted one Shop Coat of red lead and oil.
Drawings showing complete shop and assembly details shall be submitted by the Manufacturer for approval before the beginning of fabrication.
Design Loading H15

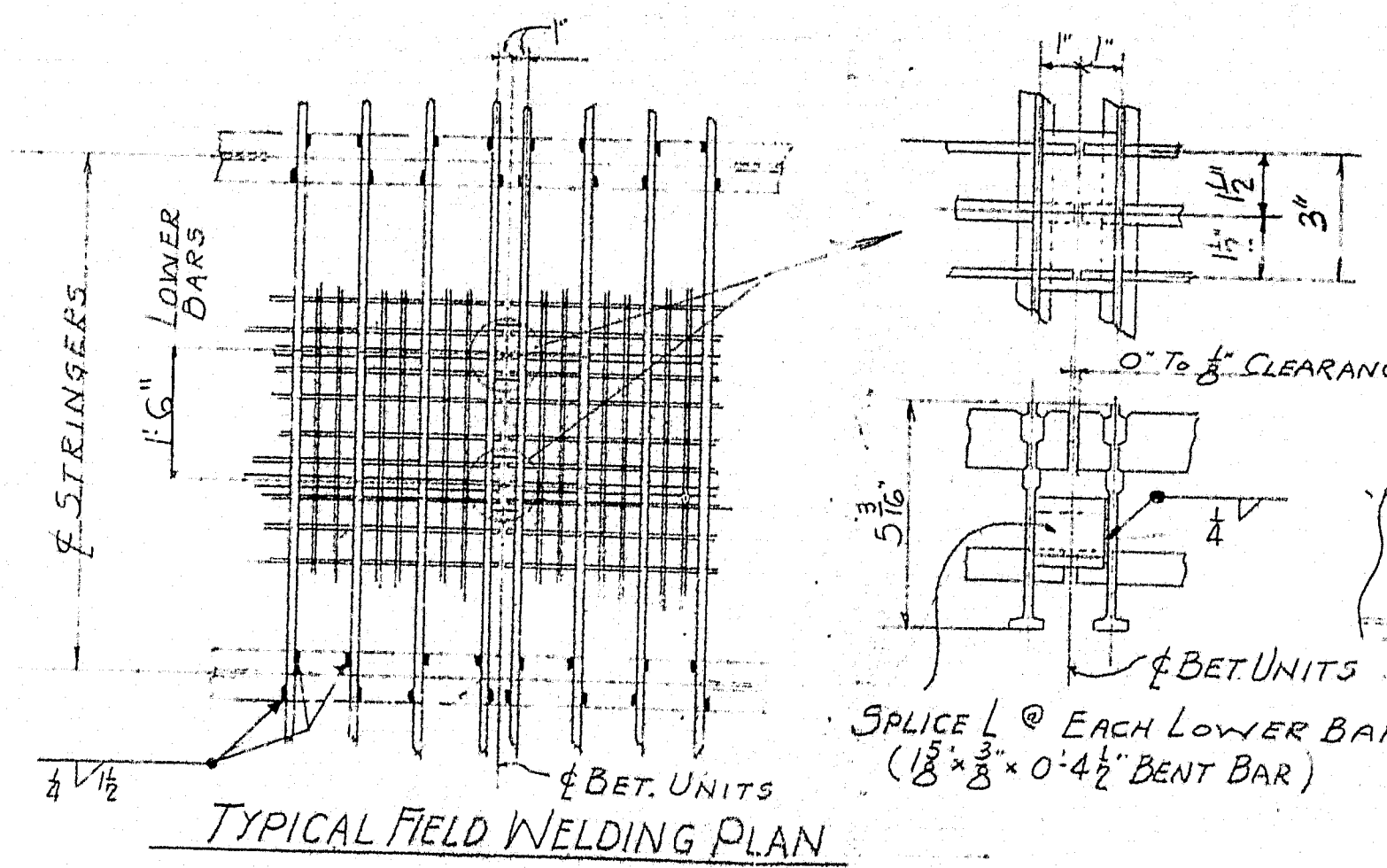
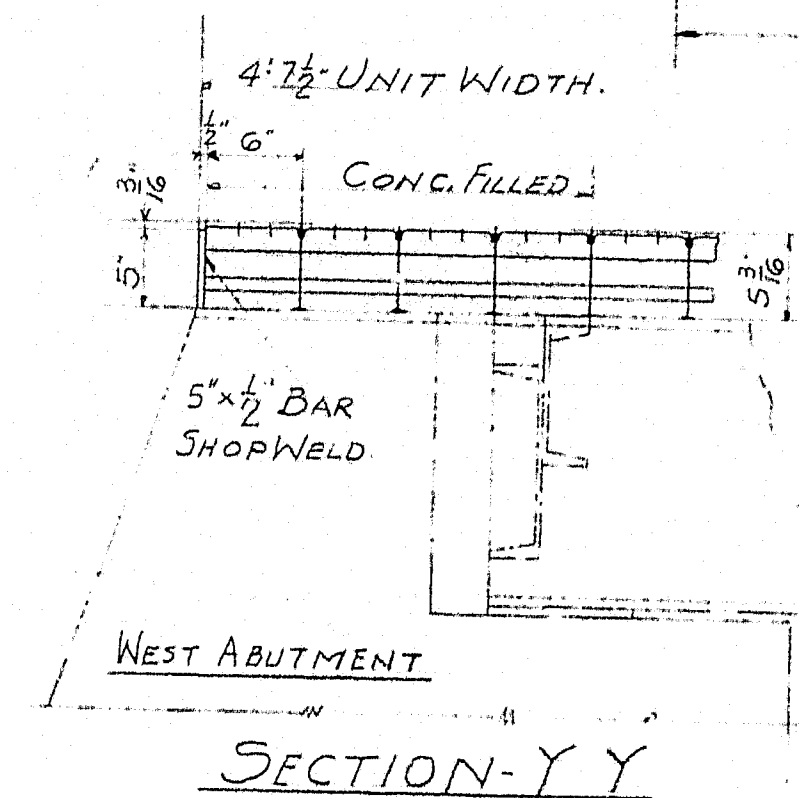
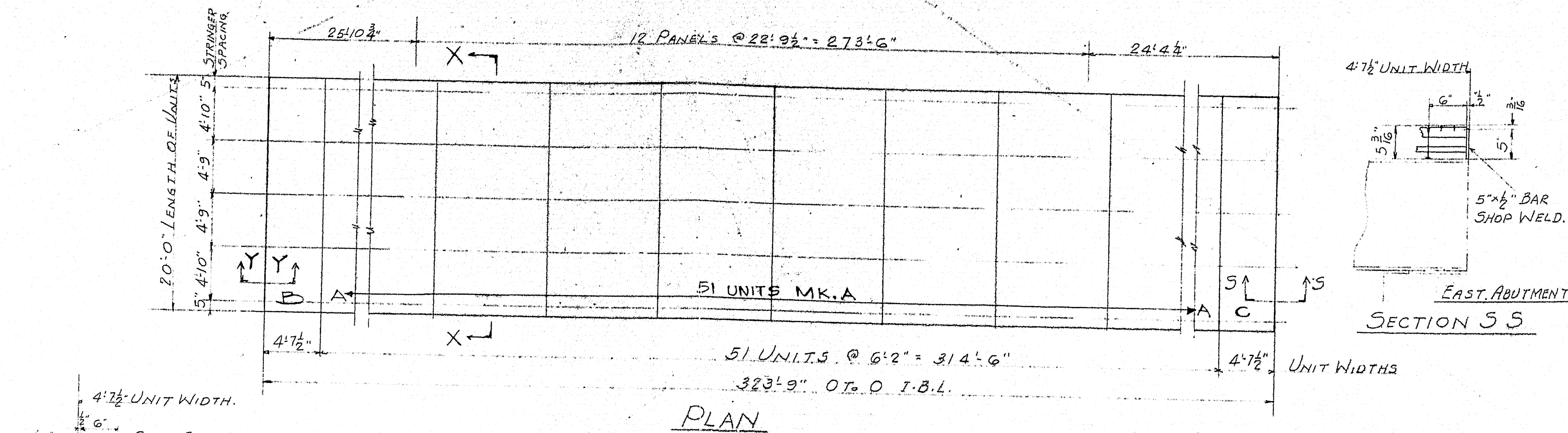


GUARD RAIL POST K1
TO RAISE RAIL BETWEEN SIDEWALK & ROADWAY

STRUCTURAL STEEL REQUIRED LIST		
No. Req'd	Mark	Description
4	CA1 ^{R/L}	Curb Angle
26	CA2	do do
One	EP	Expansion Plate (West Abut.)
4	B	Support for Expansion Plate
216	CS	Curb Support
4	S1	Floor Support (Over Exterior Stringers)
24	S2	do do do do do
7	K1	Guard Rail Post (Between Sidewalk & Roadway)
14	PI	Fill between K1 and rail splice plates.

Notes
Structural Steel, Maine State Highway Commission, Bridge Division, Specifications for Steel Highway Bridges (November 1945)
Rivets and Holes as noted.
No shop paint required.

DESIGN WHITE
CHECK G.W.S.
BRIDGE 2018
STATE HIGHWAY COMMISSION
BRIDGE DIVISION
ANDROSCOGGIN RIVER BRIDGE
OVER THE
ANDROSCOGGIN RIVER
BETWEEN THE TOWNS OF
LIVERMORE FALLS & LIVERMORE
ANDROSCOGGIN COUNTY
FLOORING & STRUCTURAL STEEL
SHEET 1 OF 1 AUGUSTA, MAINE Nov. 1947.



ERECTION NOTE:

PLACE UNITS, WITH MARKED END OF UNITS, LOCATED AS SHOWN ON PLAN.

DURING ERECTION OF UNITS, CARE MUST BE EXERCISED TO PLACE EACH UNIT IN ITS PROPER LOCATION, MEASURING IN ALL CASES FROM SOME FIXED POINT, AS OTHERWISE A CUMULATIVE ERROR IN SPACING WILL APPEAR, CAUSING THE SPACE FOR THE FINAL UNITS TO BE MORE OR LESS THAN THE ACTUAL WIDTH OF UNITS.

GENERAL NOTES:

INSPECTION: CIL.

MATERIAL SHOWN IN DOT & DASH LINES NOT INCLUDED IN I.B.L. CONTRACT

SHOP PAINT: ONE DIP COAT DUPONT DULUX RED LEAD PRIMER

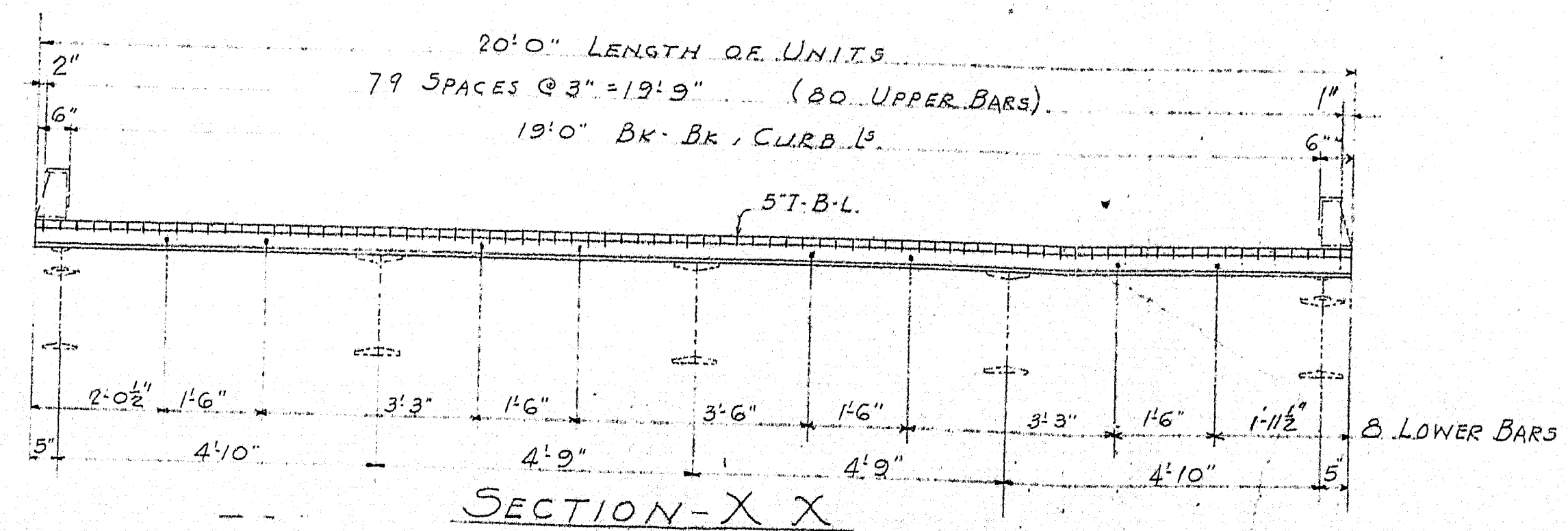
FOR SHOP DETAILS SEE SHEET #11-604 AND SHEET #11-605

BAR PUNCH SHEET #11-680 FOR SHOP USE ONLY

5" I-BEAM-LOK-OPEN (TR. TYPE) PLAN ANDROSCOGGIN RIVER BRIDGE, BETWEEN LIVERMORE FALLS & LIVERMORE MAINE.

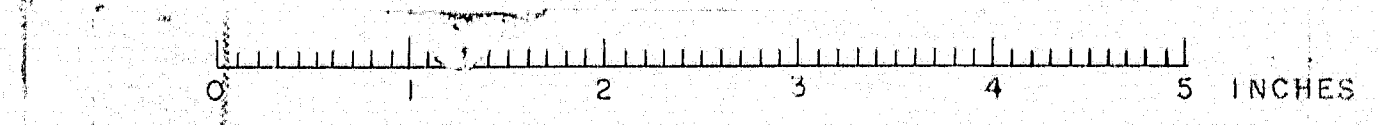
MAINE-STATE HWY. COMM. CONTR.

REVISED		
30 18808-RP-1000-11 40		
CARNEGIE-ILLINOIS STEEL CORPORATION		
SPECIALTY PRODUCTS DIVISION		
PITTSBURGH, PENNA.		
DRAWN BY T.H.H.	CHECKED BY C.S.	DATE 3-19-48
SHEET 1 OF 3	DWG. NO. F-4113	

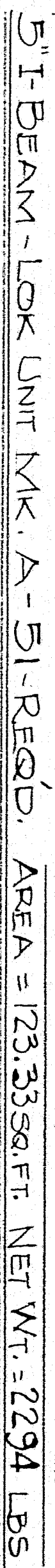


TOTAL AREA 5" I-B-L = 6,475 SQ. FT. MILL NO. V-378-GP

M-429



REFERENCE DWG. F-4113



M-430

